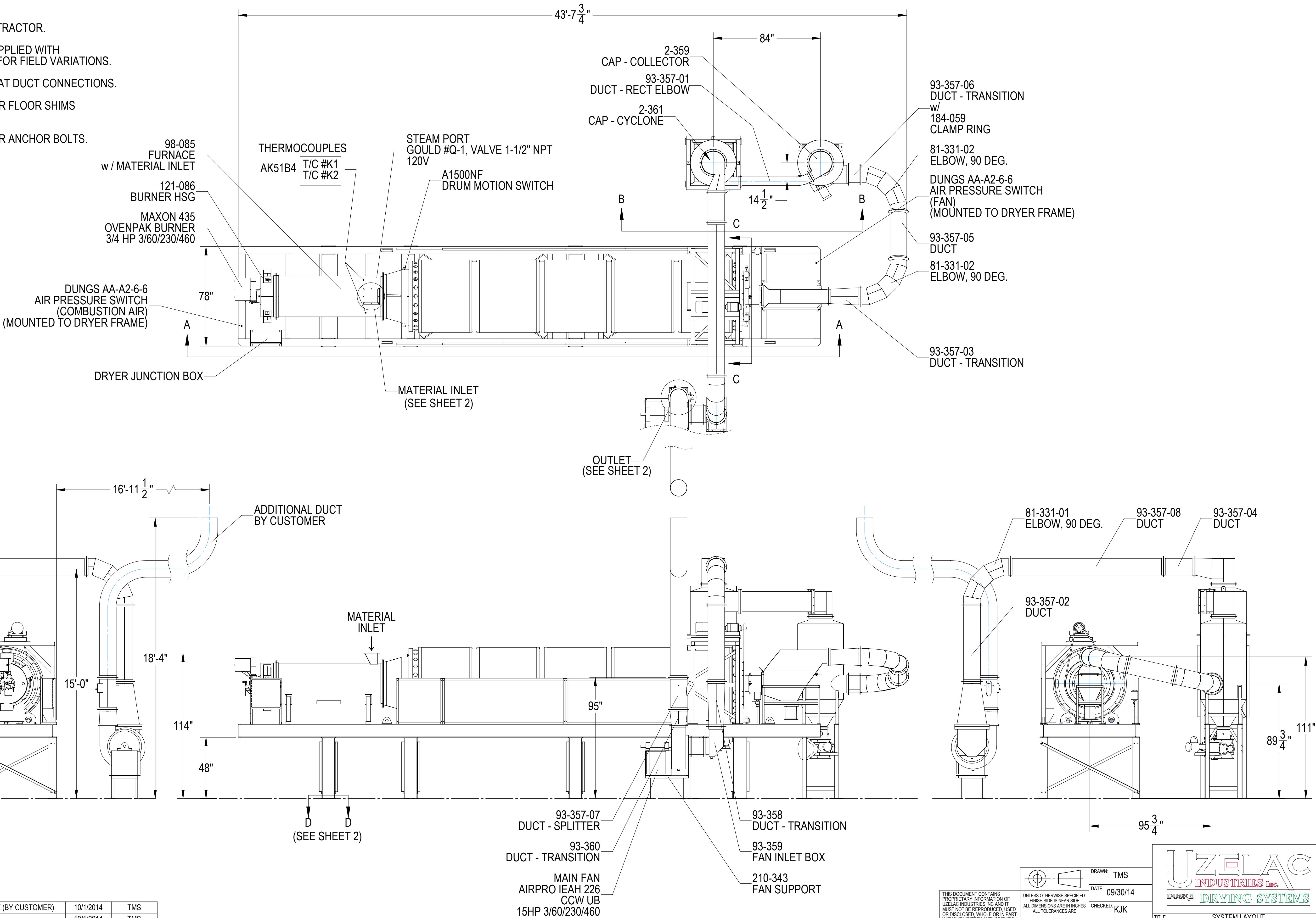


NOTES:

- 1) DUCTWORK SUPPORTS BY CONTRACTOR.
- 2) SOME OF THE DUCTWORK IS SUPPLIED WITH ONE LOOSE COLLAR TO ALLOW FOR FIELD VARIATIONS.
- 3) CAULK OR GASKETS REQUIRED AT DUCT CONNECTIONS.
- 4) CONTRACTOR RESPONSIBLE FOR FLOOR SHIMS TO LEVEL EQUIPMENT.
- 5) CONTRACTOR RESPONSIBLE FOR ANCHOR BOLTS.

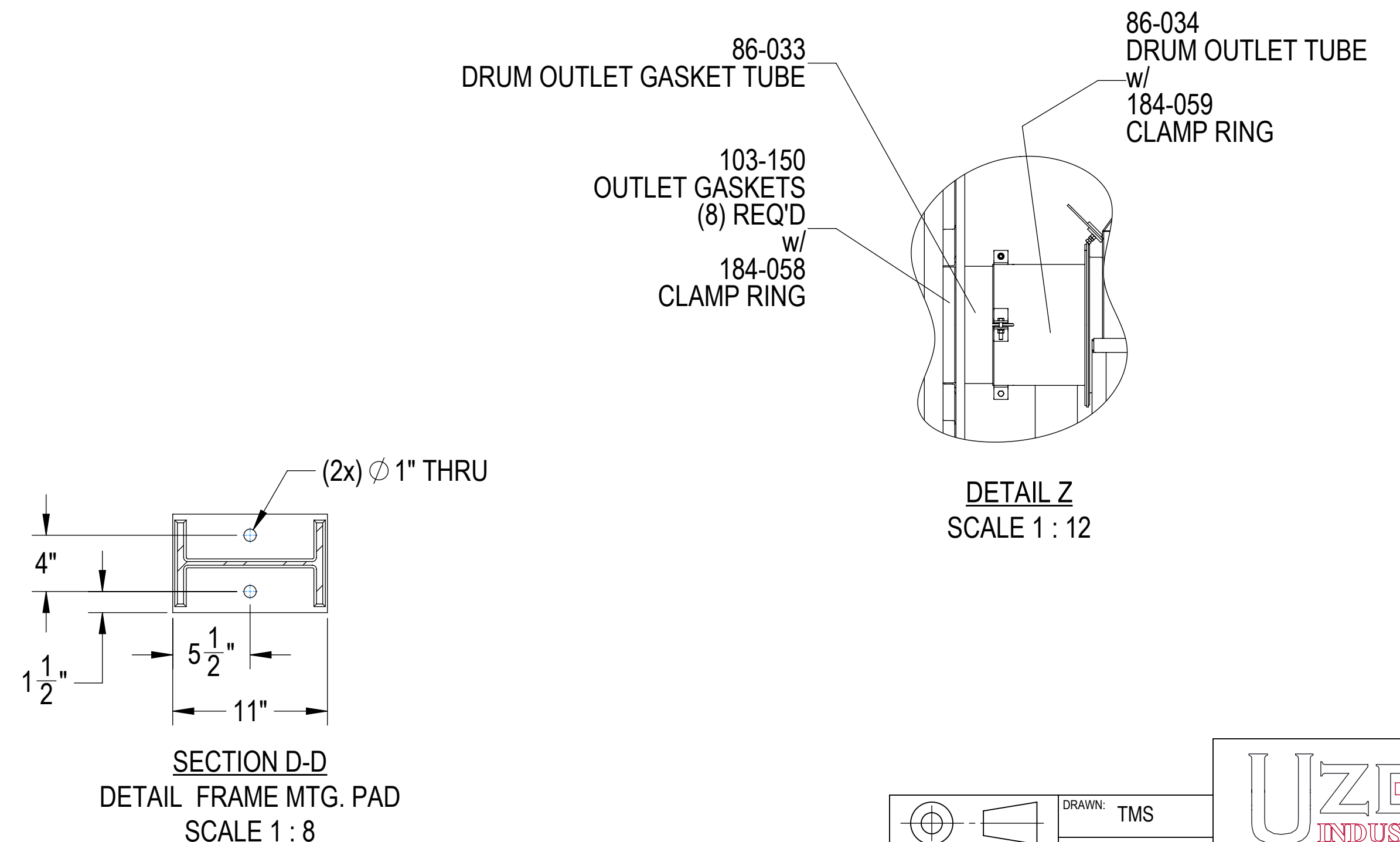
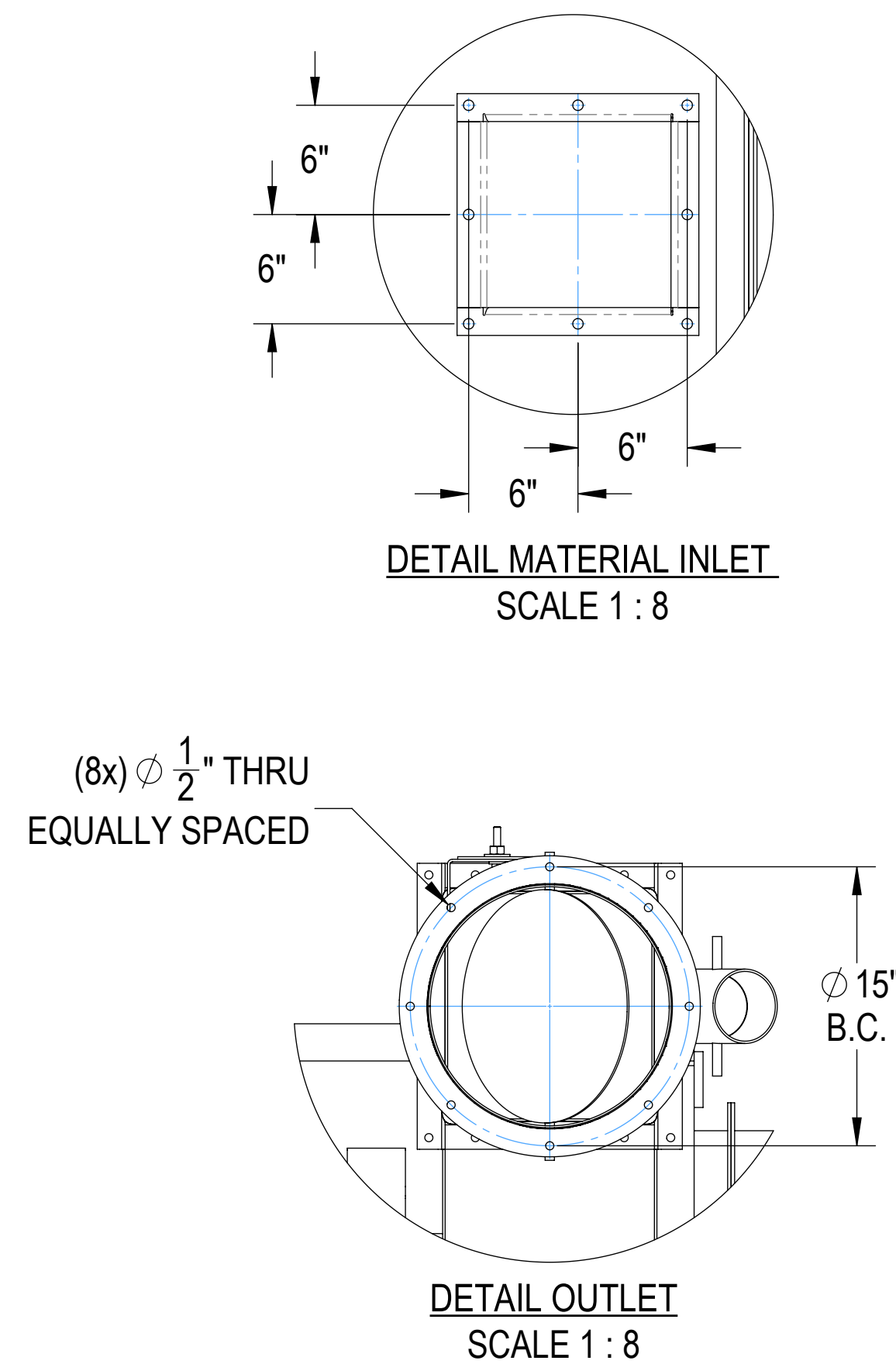
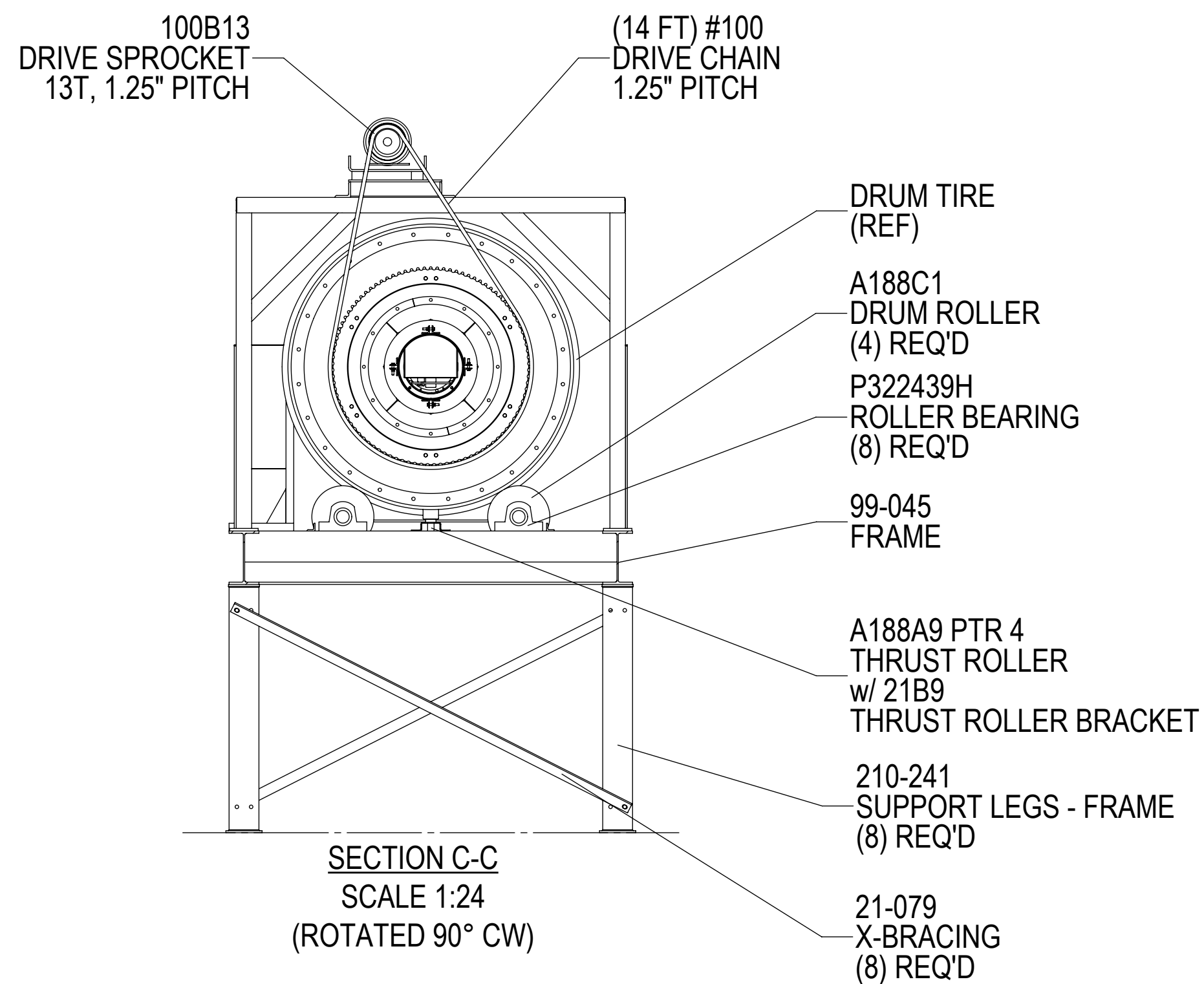
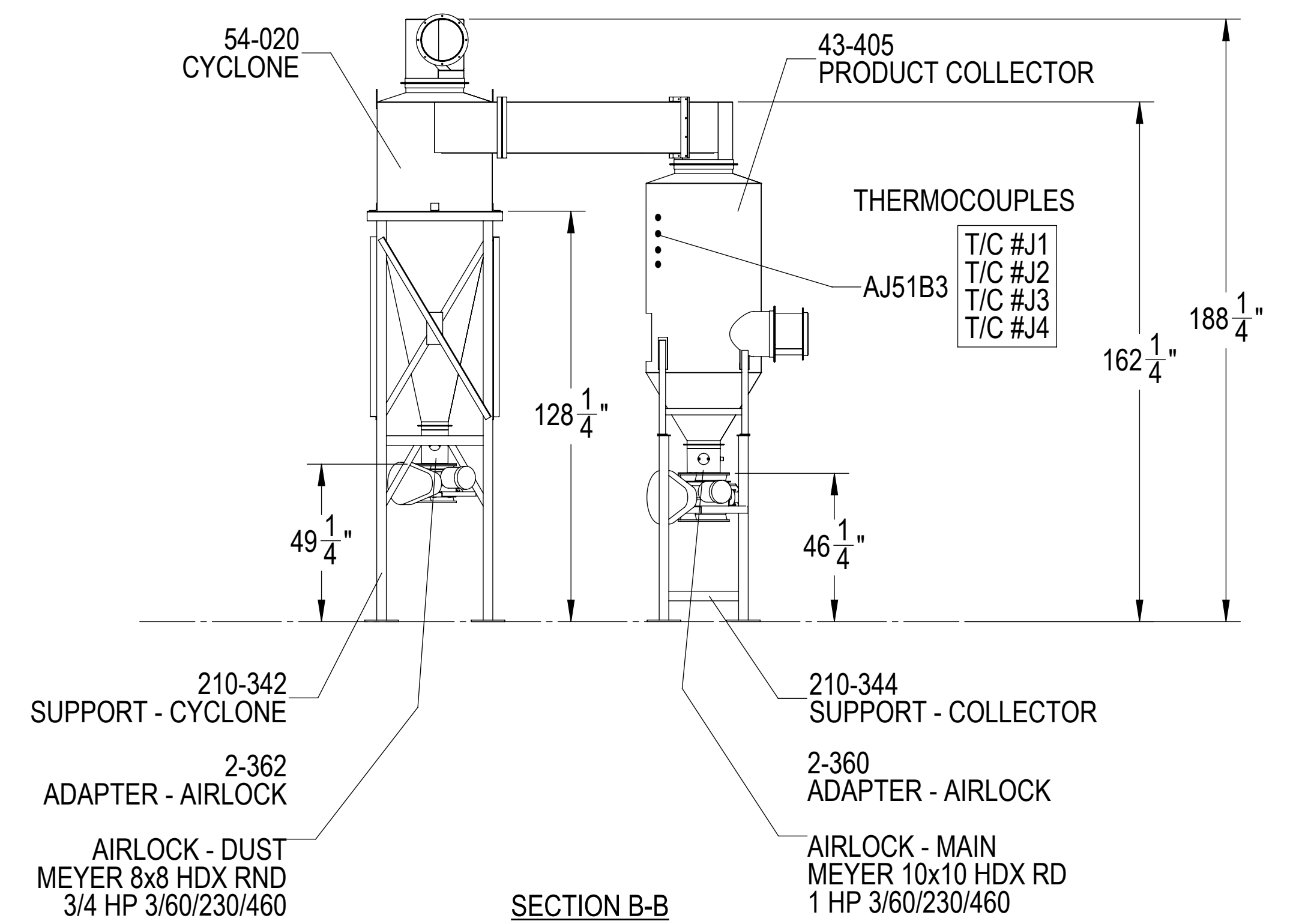
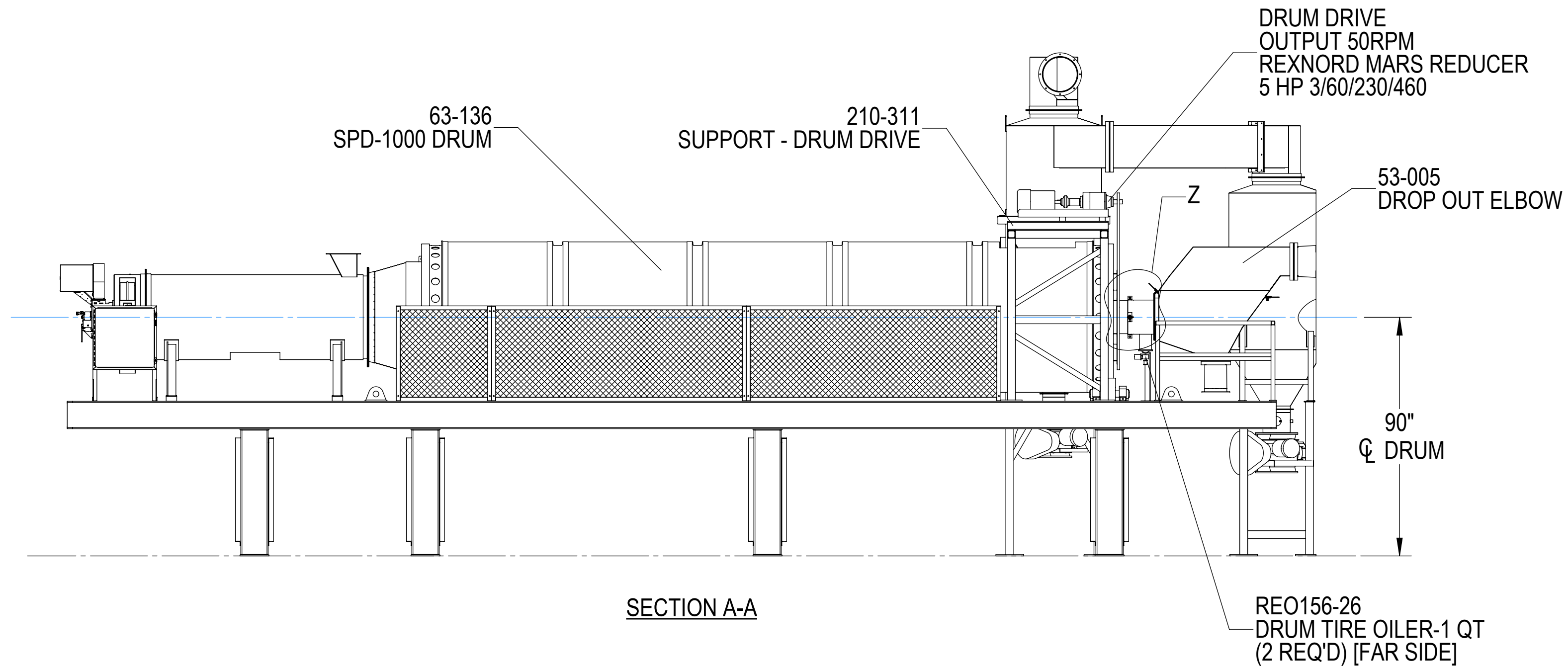


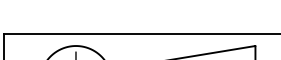


REV.	DESCRIPTION	DATE	BY
2	RELOCATED COMPONENTS, ADDED DUCTWORK (BY CUSTOMER)	10/1/2014	TMS
1	REVISED LAYOUT	10/1/2014	TMS
REV.	DESCRIPTION	DATE	BY
REVISIONS			

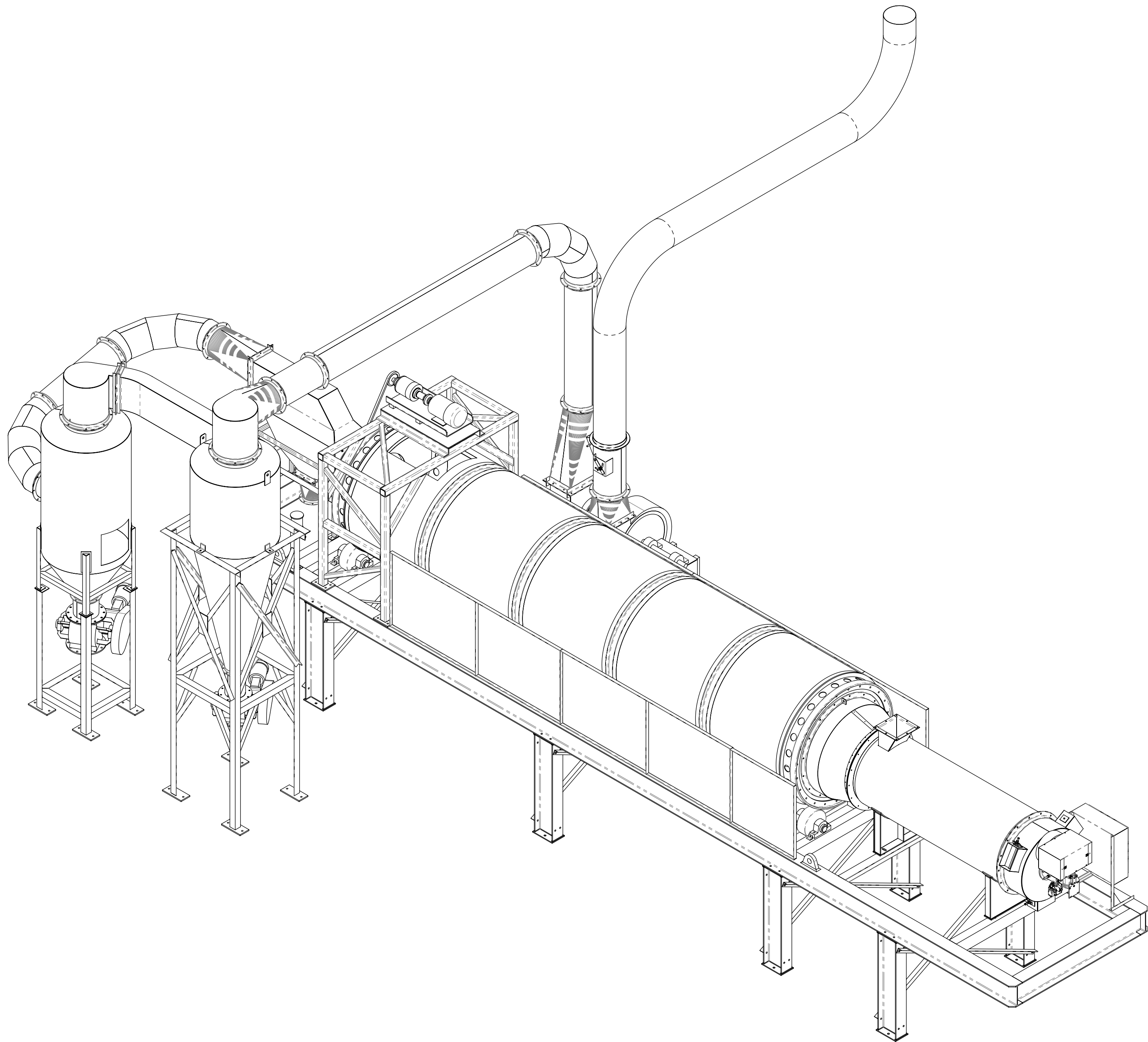
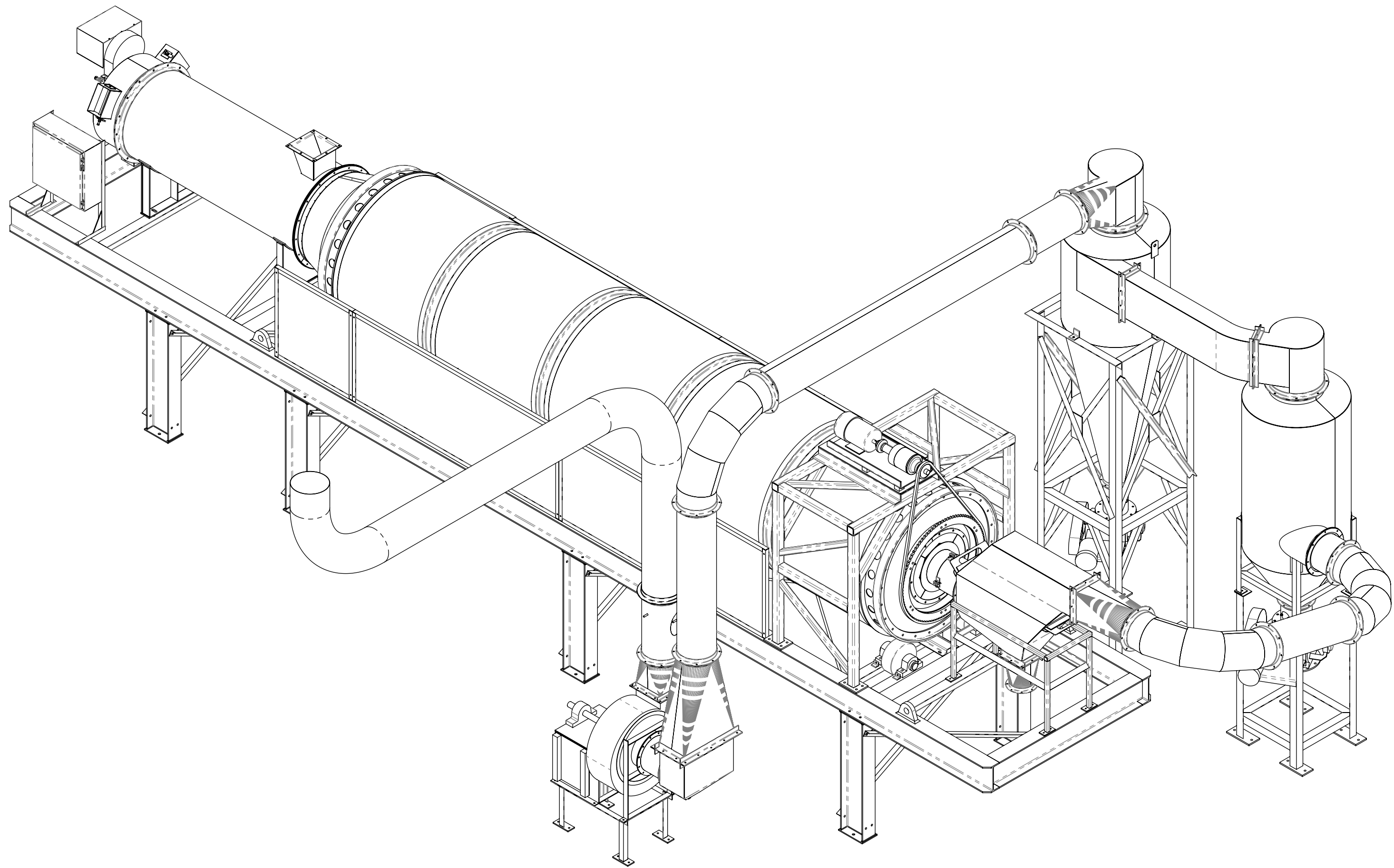
THIS DOCUMENT CONTAINS PROPRIETARY INFORMATION OF UZELAC INDUSTRIES INC AND IT MUST NOT BE REPRODUCED, USED OR DISCLOSED, WHOLE OR IN PART WITHOUT WRITTEN AUTHORIZATION FROM UZELAC INDUSTRIES INC. IT IS SUBJECT TO RETURN UPON DEMAND.	UNLESS OTHERWISE SPECIFIED: FINISH SIDE IS NEAR SIDE ALL DIMENSIONS ARE IN INCHES ALL TOLERANCES ARE
	$X \pm .125$
	$.XX \pm .060$
	$.XXX \pm .030$
	DO NOT SCALE
	ANGLES = $\pm 1^\circ$

X = ± .125
.XX = ± .060
.XXX = ± .030
ANGLES = ± 1°

DUKE DRYING SYSTEMS			
TITLE: SYSTEM LAYOUT MODEL SPD-1000 DRYER			
DWG. NO. 57-539	REV 2	SCALE 1:36	SHEET 1 of 3

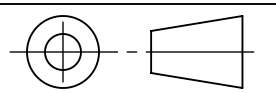


<p>THIS DOCUMENT CONTAINS PROPRIETARY INFORMATION OF UZELAC INDUSTRIES INC AND IT MUST NOT BE REPRODUCED, USED OR DISCLOSED, WHOLE OR IN PART WITHOUT WRITTEN AUTHORIZATION FROM UZELAC INDUSTRIES INC. IT IS SUBJECT TO RETURN UPON DEMAND.</p> <p>DO NOT SCALE</p>		<p>UNLESS OTHERWISE SPECIFIED: FINISH SIDE IS NEAR SIDE ALL DIMENSIONS ARE IN INCHES ALL TOLERANCES ARE:  X = ± .125 .XX = ± .060 .XXX = ± .030 ANGLES = ± 1°</p>	DRAWN: TMS	 											
			DATE: 09/30/14	<p>TITLE SYSTEM LAYOUT MODEL SPD-1000 DRYER</p> <table><tr><td>DWG. NO.</td><td>57-539</td><td>REV</td><td>2</td><td>SCALE</td><td>1:36</td><td>SHEET</td><td>2 of 3</td></tr></table>				DWG. NO.	57-539	REV	2	SCALE	1:36	SHEET	2 of 3
			DWG. NO.					57-539	REV	2	SCALE	1:36	SHEET	2 of 3	
			CHECKED: KJK												
DATE: 10/01/14															
SOLIDWORKS DRAWING DO NOT CHANGE MANUALLY															



THIS DOCUMENT CONTAINS  
PROPRIETARY INFORMATION OF  
UZELAC INDUSTRIES INC AND IT  
MUST NOT BE REPRODUCED, USED  
OR DISCLOSED, WHOLE OR IN PART  
WITHOUT WRITTEN AUTHORIZATION  
FROM UZELAC INDUSTRIES INC.  
IT IS SUBJECT TO RETURN  
UPON DEMAND.

UNLESS OTHERWISE SPECIFIED:  
FINISH SIDE IS NEAR SIDE  
ALL DIMENSIONS ARE IN INCHES  
ALL TOLERANCES ARE:  
  
X = ± .125  
.XX = ± .060  
.XXX = ± .030  
ANGLES = ± 1°



DRAWN: TMS

DATE: 09/30/14

CHECKED: KJK

DATE: 10/01/14

SOLIDWORKS DRAWING  
DO NOT CHANGE MANUALLY

<b>UZELAC</b> INDUSTRIES Inc. <b>DUKE DRYING SYSTEMS</b>				
TITLE SYSTEM LAYOUT MODEL SPD-1000 DRYER				
DWG. NO.	REV	SCALE	SHEET	
57-539	2	1:30	3 of 3	